



2022: Bastogne

Date: 24.02.2022
Time: 08.00

Briefing Pilots & Team Managers
Document: V01

From:	The Race Director
To:	All drivers & competitors
Cc:	The Stewards The Secretary of the Meeting

DRIVERS' BRIEFING LEGEND-YOUNGTIMER-CHALLENGER

Based on schedule#3 - 16/0/2022

Service park :

Reminder: The ballasting of tents and arbours must comply with article 17.9 of the regulations.

Communication between crews/competitors and the Race Direction :

For any information to be communicated to the Race Direction (withdrawal, technical problem)

⇒ Two communication routes:

a) Hand in the "**Enquiry Form**" to be completed by a Competitor Relations Officer; this document can be downloaded from www.racsba.be

b) Use the "voice server" service on the answering machine which transmits your message by internet to the Race Direction, here is the number **+32 4 375 97 15** end with a #.

Tyres :

Only marked tyres will be used in all weather conditions; the logo must be visible at all times.
Checks will be carried out throughout the event.

Mud flaps :

Mud flaps and splash guards must be fitted to the rear of all driven wheels.



Red flag :

If there is a neutralisation of the RT, the stewards will display the red flag. Be on your guard, once the red flag is displayed, an intervention vehicle may overtake you or even arrive in the wrong direction! Be attentive to the orders of the stewards, in the event of a red flag being waved, you will have to pull over to the side to let the intervention vehicles pass.

Interruption of the route :

Following a mechanical problem in a loop, the crew will be allowed to continue the event only after authorization from the Race Direction. In case of abandonment, we ask you to inform us through the same communication channel (**Enquiry Form** document or via the voice server).

Emergency :

Any decision regarding neutralisation, cancellation and urgent or important communication will be communicated during the event via SMS on your emergency number and via the new interactive application.

Virtual scoreboard :

A virtual notice board will be available where additives, decisions, starting order and times as well as official rankings will be published.

Recognitions :

Reconnaissance is strictly forbidden for all Classic competitors, including as a passenger of competitors in other authorised categories.

Departure from the Start Park (zoning) :

It will be organised with a **Legend** side and a **Classic** side.

The TC01 clocking-in time must be respected.

Do not arrive more than 5 minutes before your check-in time. On the map provided, there is a waiting area.

Where you will receive :

- The Sunday roadbook.
- The first roadmap.
- Any addenda or newsletters.
- The MapBook.

Official time: the official time is the Tripy time, which is permanently available on your Tripy, if the screen is off, a pulse is enough.



Podium - Service Park Bastogne

From Saturday 05/03/22 at 6.00 am, the direction of traffic in the park must be respected for all vehicles (competitors and assistance): entry by the back of the covered market and exit by the guard post. Unless changed at the last minute by the authorities, a valid STC must be presented at each entry to the service area.

On Saturday and Sunday, during the first passage to the podium, there will be no hourly score, just a **CP score** to allow the different categories to pass through at the same time, regardless of the order of passage to the podium.

Saturday: Pay attention to your **roadbook** and your **route sheet**. Sometimes you will do assistance in the park and then come out at the TC Service OUT without passing through the Podium and sometimes you will have to pass through the Podium for a CP after your assistance and before the TC Service OUT.

Sunday: You will do assistance in the park and then you will pass on the Podium (CP) before coming back to the TC Service OUT. The 2 groups will return at the same time and there will be a Legend and a Classic route.

TC Service OUT: located at the guard house of the covered market, the right lane for Legend/Youngtimer/Challenger, the left lane for Classic 60/Classic 50.

Road route :

The roadbook course must be followed in its entirety, unless you miss one or more RTs and request permission to re-run the course from the Race Direction.

The connection times have been calculated to be long enough to allow you a minimum of assistance but above all to respect the Highway Code in complete safety.

Special focus on the crossings of Bastogne, Hives, Buisson, La Roche, Neffe, Michamps, Houffalize, Brisy, Tavigny, Buret, Compogne, Bertrix.

In the roadbook, almost all the entrances to towns are indicated to warn you and allow you to adapt your speed. There will be many speed checks by the police.

Slow Zones (SZ):

They are all mentioned in the roadbook, marked on the road with a red sign on each side at the entrance to the SZ and a green sign on each side at the end of the SZ. At night, the signs will be doubled by an LED light.

The management of the SZ is free, either maintain a constant speed or mark the stop as long as the time between entry and exit is not less than the imposed time (10"/100 m, 20"/200 m, 30"/300 m...)

The Tripy will indicate the SZs as explained in the Annex.



Important: an SZ does not mean that the RT average decreases, after the SZ you still have **at least 500 m** before the first time to catch up.

Time control (CH) score :

Scoring in the course of the ideal minute which is to be considered in the 30" preceding and 29" following; in the 30" preceding, the co-driver must ask the steward for his ideal time except in case of delay. If the steward makes the car clock in early (injunction), the co-driver must demand his ideal time (not in case of delay).

Early score at the CH :

It is only allowed at certain CTs, notably at RT Vaux-sur-Sûre and **Bastogne Podium** at the end of the stage. The co-driver must give his ideal time except in case of delay. **This permission is always mentioned on your route sheet.**

Delay on the road :

The first 45 few minutes of delay per stage (day) do not incur a penalty.

!!! The TC's will close minutes 15 after the theoretical time of the last competitor.

Departure procedure :

ALL starts will be given by the minute or by 30 seconds, depending on your priority.

Reset the distance on the start line to 0.

There is only one Flying Start, at the start of the RT Les Herdiers d'Ardenne, at which point the actual start is at the green sign (inside the loop, this is where the time and distance must be reset to 0.

Saturday: only competitors identified as having priority (specific sticker) will have the right to a one-minute gap from the competitor in front of them at the start of the RT, whatever their position in the race and for the entire duration of the stage.

There is no point in asking for extra time at the start line, it will be refused.

At the STOP point, you must stop and the steward will initial your route sheet.

Sunday: all competitors in all categories will race within one minute of each other!

End of RT: at the STOP points, the stewards will initial your route sheet, this initials your CP. The stewards do not know your time at the Flying Finish. **For the Legend/Youngtimer/Challenger categories**, when you cross it, your time will remain on the Tripy screen from the Flying Finish to the Stop point. The distance to the Flying Finish will be counted on the Tripy screen.



Category Legend :

In the annex, you will find the Target Times for each RT.

Challenger category:

In the appendix you will find the exact distances for each RT. You will have to calculate your ideal finishing time yourself.

The tenths of a second are all rounded down.

Example: 4' 25" 9 = 4' 25"

PowerStage :

For Legend-Youngtimer-Challenger, all RTs in DAY 2 are in Powerstage. All points and penalties are doubled, with the exception of road penalties and passage controls.

Assistance areas :

In the roadbook, you will find the places imposed as assistance zones; these correspond to the map and the assistance plan that you have been given.

Outside these areas, assistance is strictly forbidden!

Checks will be carried out throughout the event by judges of fact, while the police are also aware of the areas that are permitted or not.

Outside an authorised assistance zone, in the event of a problem, the crew is authorised to intervene alone on the car but may not receive any equipment or external assistance.

RT Les Herdiers d'Ardenne: if the RT were to be neutralised with a deviation, the competitors would not pass through the service point and would return directly to Bastogne.

Notebooks :

Cedric De Cecco's notes have been sent to you by email during the week so that you can watch the RT videos with the notes.

The notebooks for Saturday and Sunday will be given to you at the administrative checkpoint to give you a basis for your note taking and to familiarise you with the notes for Sunday.

See also the Communication Bulletin.

Petrol stations :

The stations along the route are all listed in the roadbook.

At these locations, only refuelling is allowed, not assistance.

Toilets :

You will find a WC at each Regroup area as well as at each time control before the start of a RT, if necessary you can clock in at your own time and ask the marshal for extra time to get there before the start.



Abandonment :

In the event of retirement, the crew must communicate its race number on the race management's answering machine and return the transponders.

Reminder : Art 20.3.10. Crews who have abandoned on Saturday and who wish to restart on Sunday must inform the Race Direction before 2230:00 on 0/053.

In case of final abandonment, the transponder must be returned before the arrival of the rally to the old fire station, rue de Wiltz, 11, 6600 Bastogne.

Reminder: only those competitors who have passed the TC on the finishing podium will appear in the event classification.



Annexes

1. Target Time Legend/Youngtimer
2. Challenger averages
3. Using the Tripy and on-screen information



LBB2022 Target Time Legend/Youngtimers

	Legend/Youngtimers mm'ss''	Precise distance FF*/ Precise length FF
RT1	6' 04''	10.627 km
RT2	5' 30''	9.918 km
RT3	8' 10''	14.973 km
RT4	4' 54''	8.588 km
RT5	6' 51''	12,355 km
RT6	5' 54''	10.627 km
RT7	5' 24''	9.918 km
RT8	8' 01''	14.973 km
RT9	4' 41''	8.588 km
RT10	6' 37''	12,355 km
RT11	7' 06''	13.044 km
RT12	3' 54''	6.828 km
RT13	7' 21''	13.493 km
RT14	7' 41''	14.091 km
RT15	8' 10''	14,993 km
RT16	8' 40''	14.916 km

* FF = Flying Finish

! The distance given here takes precedence over the distance indicated in the roadbook!



LBB2022 Challenger Averages

	CHALLENGER Km/h	Time to calculate	Precise distance FF*/ Precise length FF
RT1	80		10.627 km
RT2	80		9.918 km
RT3	80		14.973 km
RT4	80		8.588 km
RT5	80		12,355 km
RT6	80		10.627 km
RT7	80		9.918 km
RT8	80		14.973 km
RT9	80		8.588 km
RT10	80		12,355 km
RT11	80		13.044 km
RT12	80		6.828 km
RT13	80		13.493 km
RT14	80		14.091 km
RT15	80		14,993 km
RT16	80		14.916 km

* FF = Flying Finish

! The distance given here takes precedence over the distance indicated in the roadbook!

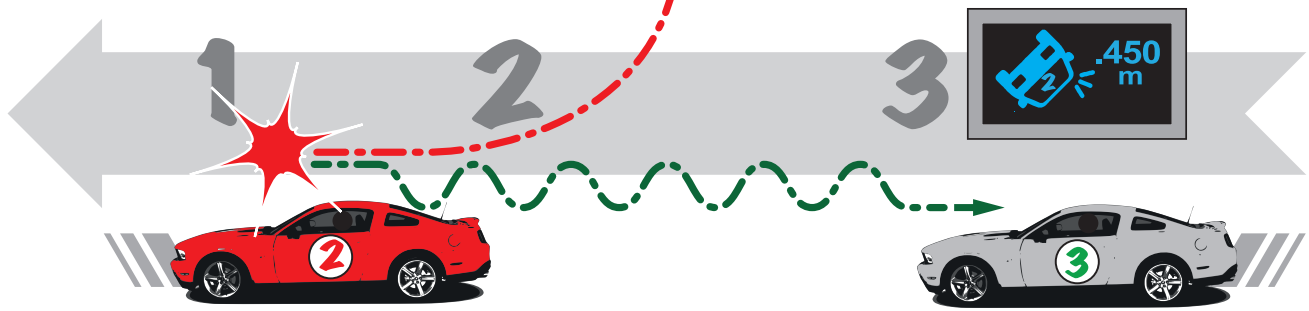


ALARME - S.O.S.

L'alarme S.O.S. de la voiture **2** prévient > Le PC COURSE via 4G
> Les voitures à proximité dans la spéciale

Déclenchement automatique de l'alarme si
> **ARRÊT** en spéciale de **+20 secondes**
> **APPUI** sur le bouton rouge

Les voitures a proximité voient l'écran **DANGER**
ou l'écran **ACCIDENT** + la **DISTANCE** en mètres
qui les sépare de l'accident.



L'alarme n'est plus émise dès que le véhicule se déplace de **200m**

Cette notification d'alarme **disparaît après 3 minutes** ou par appui sur **OK**

ZONE À VITESSE LIMITÉE DZ-FZ

Déclenchement automatique d'une alarme sonore pour indiquer :

- > Une approche à moins de 200m d'une zone à vitesse limitée (ex.: DZ-36)
- > Un dépassement de la vitesse autorisée dans la DZ (bip continu) jusqu'à la fin de la zone (FZ-36)

En approche de la DZ(36) avec décompte de la distance restante avant d'entrer dans la DZ
Dans cet exemple, il reste 100m avant le début de la zone à vitesse limitée.

Décompte de la distance restante dans la zone de vitesse limitée jusqu'à cette fin de zone FZ(36)
Dans l'ex., il reste 250m avant la fin de zone à vitesse limitée.

Retour à l'écran standard avec affichage normal : heure:min:secondes et statuts batt.-GPS-4G

